

Attachmate INFOConnect Enterprise Edition for Unisys

Productivity-Focused Emulation for the Unisys Enterprise

Attachmate® INFOConnect® Enterprise Edition for Unisys® delivers secure, multi-host access from a single, integrated desktop application. INFOConnect helps extend the value of mainframe applications and accelerate employee productivity, reducing costs enterprise-wide.

INFOConnect provides convenient portal integration of host access clients, turning desktop emulation into a feature-rich, browser-launched host access solution.

INFOConnect also provides an option to further extend the reach of host access to IBM System z, System i, and UNIX/OpenVMS systems. Because all emulation types run within a single application framework, multi-host access is streamlined and increases overall efficiency.

The next generation in Unisys emulation

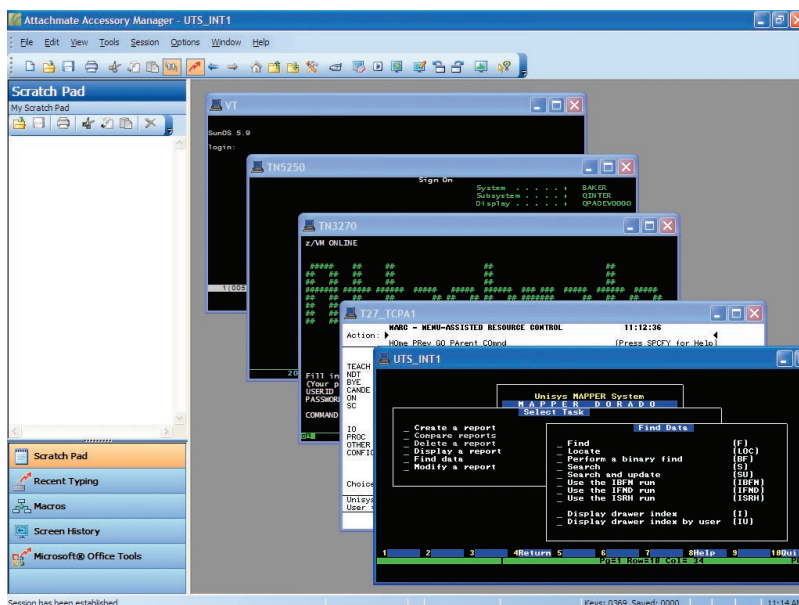
Never before has a T27 or UTS emulator combined emulation technology with a comprehensive, productivity-focused feature set comparable to that found in Microsoft Office applications. Only INFOConnect makes Unisys applications an integral part of the Office products that you use every day—because now Word, Outlook, and host emulation all work together.

Extend the life of your mainframe applications

By modernizing your legacy applications right out of the box, INFOConnect extends the life and value of your

KEY BENEFITS

- NEW** Compatible with Microsoft Windows 7
- Certified for Microsoft Windows Vista
- Microsoft Windows XP Compliant
- Integrated with Microsoft Office applications to save time and reduce operating costs
 - Supports new and evolving technologies to ease migration to new platforms
 - Includes special productivity features—including Spell Check, Screen History, Auto Complete, and Auto Expand—for improved user efficiency
- NEW** Protects sensitive data with macro encryption
- NEW** Supports IPv6
- Includes Reflection® Secure FTP Client
 - Enhanced data protection to meet strict security standards
- Specially designed for the printing of A Series and ClearPath NX/LX printing
- NEW** Certified for FIPS 140-2
- NEW** Complies with DoD PKI
- NEW** Supports SSL for secure host access
- Portal integration of host access clients
- Custom installation functionality



Various INFOConnect tools and emulation sessions run under a common application framework, enabling users to easily integrate information from multiple host systems.

host applications, bringing them up to speed with the latest PC implementations already installed on your enterprise desktops.

With INFOConnect, emulation reaches a new level with Spell Check, Auto Expand, Auto Complete, Recent Typing, Screen History, and a convenient Scratch Pad. Seamlessly integrated with Outlook, INFOConnect allows you to create mail messages, notes, tasks, and appointments—or even launch Word directly from within an emulation session window.

Only Attachmate combines this comprehensive set of features—to allow organizations to immediately lower costs, boost user productivity, and maximize ROI—in one high-performance solution.

Eliminate errors and redundancies with productivity enhancements

Spell Check—INFOConnect helps eliminate user errors with fully configurable Spell Check features. You can pre-set INFOConnect to automatically correct misspelled words as data is entered into various host screen fields.

Auto Expand—You can pre-set acronyms or shortcuts for long words, phrases, or complex repeat commands. Every time the pre-configured shortcut has been typed within the host screen, it will automatically expand to the desired word or phrase. INFOConnect also reduces the number of keystrokes required to execute tasks or enter data, so you can quickly move to the next task or customer call.

Auto Complete—This feature recalls what you type, and automatically makes suggestions to auto-populate fields as it learns common commands that are repeated. You save keystrokes and valuable time.

Recent Typing—Typical legacy applications often require that data and commands be manually entered more than once. The recent typing feature lets you quickly view and select repeat words and commands, eliminating the need to manually re-enter information.

Measure user productivity with Keystroke Meter

INFOConnect productivity features reduce the number of keystrokes required to execute tasks or enter data. The Keystroke Meter calculates the number of keystrokes required for each task performed, and displays the actual number of keystrokes saved when tasks are executed using productivity features such as Auto Complete or Auto Expand.

Revolutionize call center tasks with INFOConnect features

Scratch Pad—Call center employees often handle many calls in a short time, then do the cleanup work—such as interacting with multiple applications and documenting the call—at a later time. The Scratch Pad lets users take notes as they work with host applications, which helps them maintain correlation between their notes and the application they are working with. This reduces errors, improves service, and ensures that crucial information is captured and saved.

History—The history feature enables you to view, copy, and paste information from previous screens into current active screens with the ease of a mouse-click.

Launch applications right from the session window

INFOConnect enhances session productivity, because you no longer have to toggle back and forth between applications. Within the session window, you can create and send mail messages, create tasks, notes, and appointments—or launch Word. This integration of legacy data and Office allows you to work with multiple applications at once, with no disruptions to workflow.

Save time and money on every transaction

Intelligent navigation lets you automatically bypass unneeded screens and immediately access pertinent information. INFOConnect bookmarks hold your place within the host application and give

KEY FEATURES

A complete emulation package for today's Unisys enterprise

Attachmate INFOConnect Enterprise Edition offers portal integration of host access clients, and integration with Microsoft Windows 7, Windows Vista, and XP applications to significantly boost user productivity.

Extend printing capabilities enterprise-wide

Specially designed for A Series and ClearPath NX/LX printing, INFOConnect includes a Print Manager, providing host pass-through printing for up to four printer addresses. Libra and ClearPath NX/LX reports and files can be printed on a local or networked printer, or can be saved to disk and printed later, at your discretion.

Print Manager operates independently from the terminal application, so jobs can be scheduled to print in the background, taking advantage of Windows software print spooling.

INFOConnect also supports other types of host printing. Whether you are accessing Unisys Dorado system, IBM System z or System i, systems, you can simultaneously view several sessions, each in a separate window, and perform print jobs locally.

Regardless of the host from which data is printed, a print monitor is available to let you view and manage both local and networked print queues.

you a convenient, one-click way to return. Bookmarks transport you directly to desired application screens, providing the easiest way to work with enterprise applications.

Customizable QuickPad is a convenient on-screen window that incorporates buttons, icons, bitmaps, or other graphical elements that can be clicked to involve actions, such as sending keystrokes to the host, running a macro, or launching an application. They can be configured to appear whenever their designated host session, or individual host screen, is accessed. QuickPad is ideal for automating hard-to-remember tasks, streamlining routinely repeated tasks, and exercising mouse commands instead of using the keyboard.

Fully leverage the latest Microsoft Windows platforms

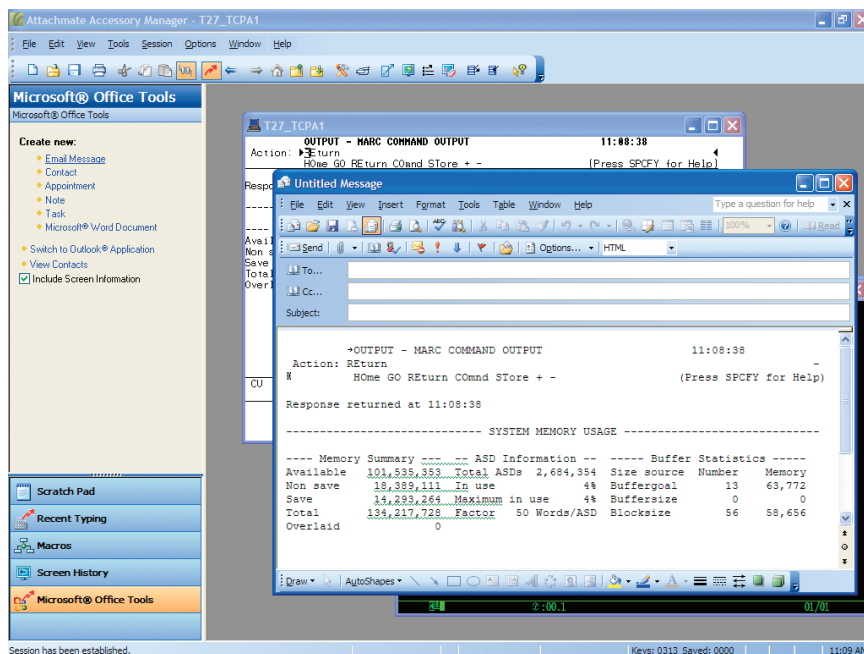
Compatible with Windows 7, certified for Windows Vista, and designed for Windows XP, INFOConnect lets you leverage your platform of choice. It takes advantage of the capabilities of the latest versions of Windows, including application self-repair, roaming user profiles, and power management features.

Secure your sensitive data

Unsecured macros are risky: They can allow users to easily record and share sensitive data like sign-on credentials and payment information. But with INFOConnect, macro encryption prevents private data stored in INFOConnect macros—including macros you've already created—from being tampered with or compromised.

Integrate full-featured emulation within a corporate portal or web page

Unlike other emulators, INFOConnect fully supports web and portal integration. INFOConnect sessions can run within or outside a portal framework. The ability to launch and run clients from within a portal ensures that critical host applications are available to you when and where you need them. Inside the portal frame, INFOConnect sessions can be maximized or minimized, allowing you to work with several applications at once.



From within an emulation session, users can launch Microsoft Office applications without having to toggle back and forth between screens.

TECHNICAL SPECIFICATIONS

SYSTEM REQUIREMENTS

Available Enterprise System Support

- Unisys Dorado and ClearPath IX
- Unisys Libra and ClearPath NX/LX
- IBM System z (mainframe)
- IBM System i (AS/400)
- UNIX and OpenVMS

Available Emulation Support

- UTS
- T27
- 3270
- 5250
- VT

Client Operating Platform Support

- NEW** Windows 7
- Windows Vista
- Windows XP
- Windows 2000 Professional

Security Features

- Reflection Secure FTP Client with enhanced data protection to meet strict security standards

- NEW** Supports SSL

- NEW** FIPS 140-2 certification

- Complies with DoD PKI

- NEW** Encryption of CASL and Basic macros

Emulation Client Features

- Spell Check
- Auto Expand
- Auto Complete
- Recent Typing

CONTINUED ON NEXT PAGE

Organizations can begin moving current users toward a web-based or remodeled application without affecting productivity. INFOConnect protects organizations from incurring new costs or requiring additional training.

Customize installation configurations with ease

INFOConnect Custom Installation Wizard allows administrators to modify the configurable installation and default User Interface parameters. No programming expertise is required and configuration time is cut dramatically. By fully customizing installations, you ensure desktop uptime, increase productivity, and save costs.

Ease administration with Terminal ID resource management

With INFOConnect ID management, you can centrally manage host session Terminal IDs for Unisys, IBM 3270 and 5250 host connections. This is ideal for remote or occasional users.

The administrator can allocate Terminal IDs on demand and only when required. ID management can pool Terminal IDs, conserving Terminal ID resources and reducing operating expenses. If a fee is associated with each terminal session, address pooling further extends cost savings by enabling a population of emulation clients to share a limited number of Terminal IDs.

TECHNICAL SPECIFICATIONS

CONTINUED FROM PREVIOUS PAGE

- Built-in Scratch Pad and Screen History
- Microsoft Office integration
- Single application framework
- Customizable user interfaces
 - Full color editing
 - Customizable toolbar
 - Dynamic HotSpots
 - Keyboard mapping
- QuickPad
- Intelligent navigation/bookmarks
- OLE integration support
- File transfer support
- Host print

About Attachmate

Attachmate delivers advanced software for terminal emulation, legacy modernization, managed file transfer, and enterprise fraud management. With our technologies, more than 65,000 businesses worldwide are putting their IT assets to work in new and meaningful ways. www.attachmate.com



Corporate Headquarters
 1500 Dexter Avenue North
 Seattle, Washington 98109
 TEL 206 217 7500
 800 872 2829
 FAX 206 217 7515

EMEA Headquarters
 The Netherlands
 TEL +31 172 50 55 55
 FAX +31 172 50 55 51

Asia Pacific Headquarters
 Australia
 TEL +61 3 9825 2300
 FAX +61 3 9825 2399

Latin America Headquarters
 Mexico
 TEL +52 55 9178 4970
 FAX +52 55 5540 4886

WEB attachmate.com
 E-MAIL info@attachmate.com

For regional office information, visit www.attachmate.com.